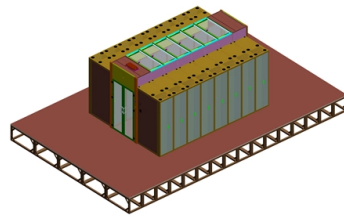


# The electrical distribution box is in disarray



## Overview

Specific measures include: strictly follow the specifications for the installation and layout of the distribution box; strengthen electrical connection and grounding inspections to ensure that the wiring is firm and the grounding is good; regularly clean and inspect the. Specific measures include: strictly follow the specifications for the installation and layout of the distribution box; strengthen electrical connection and grounding inspections to ensure that the wiring is firm and the grounding is good; regularly clean and inspect the. In modern power systems, distribution boxes are the core equipment for power distribution and control, and their stable operation is crucial to ensuring the safety and reliability of power supply. However, in actual applications, distribution boxes often encounter a series of problems, which not. Distribution boxes are the unsung heroes of our electrical systems, quietly managing power until something goes wrong. When they start tripping, overheating, or making strange noises, it's more than just an inconvenience - it's your home's cry for help. In this guide, we'll walk through these. During the construction and installation process, the methods to solve and prevent the failure of the distribution box include: Quality inspection: Make sure the distribution box and its components meet the standards, check whether the wiring is firm, and whether the materials are qualified. Today, electrical systems are essential for homes and industries. They are generally installed at locations such as the low-voltage side of.

## Article Content

Crackhead/pass.txt at master · moimikey/Crackhead ·

How to create a web form cracker in under 15 minutes. - moimikey/Crackhead

Common Issues and Troubleshooting for 3 Phase Electrical

However, like any other electrical device, a 3 Phase Electrical Distribution Box can encounter issues over time, affecting performance and safety. Knowing how to identify and resolve

Common troubleshooting of distribution boxes: analysis of causes of ...

Distribution boxes are the unsung heroes of our electrical systems, quietly managing power until something goes wrong. When they start tripping, overheating, or making strange noises, it's more

How to solve and prevent the failure of the distribution

To sum up, qualified construction and maintenance operations, in conjunction with standards and safety measures, can effectively prevent and solve distribution

Power Distribution Box

Check the tightness of electrical connections along the power supply cable. Tighten any loose connections. Use a volt meter to measure voltage at the power supply and at the power distribution

Distribution Box Guide: Types, Components & Solutions

Understand distribution boxes (DB boxes) in 5 minutes. Learn about types, components, functions, and uses. Find the perfect DB box for your needs.

What is the general fault of the distribution box? How to

The distribution box must be inspected and maintained once a month, and the new projects that fail to pass the customs should be handled properly and relevant

Electrical Distribution Box Installation Mistakes

The Electrical Distribution Box is a very important part of the power system, improper installation will cause a lot of danger and loss. Here are some things

Distribution Box Guide: Types, Components & Solutions

What is a Distribution Box? A distribution box, or DB box, is a circuit breaker enclosure. It is a vital part and central hub of any electrical system. The

What is an Electrical Distribution Box? A

Discover everything you need to know about electrical distribution box! Learn about types, components, and how to choose.

Common trouble shooting of distribution box

When the distribution box is in daily operation, with the passage of time, there will inevitably be failures, so for some common failures, some improvements can be made to the distribution box.

What is the Function of a Distribution Box in Electrical Systems

Understand the function of the distribution box in electrical systems and how it ensures safe and efficient power distribution.

Common Issues and Troubleshooting for 3 Phase Electrical Distribution Boxes

Conclusion Maintaining and troubleshooting a 3 Phase Electrical Distribution Box is crucial to ensuring smooth and reliable power distribution for industrial and event setups. By

Common Issues with Distribution Boards and How to Address Them

However, like any other component of an electrical system, distribution boards can develop issues over time, affecting electrical safety and performance. We will explore some of the

What is a Distribution Box? – A Comprehensive Guide

A distribution box organizes and controls power flow, ensuring safety and efficiency in electrical systems.

Understanding Distribution Boxes: A Comprehensive

A distribution box, also known as a power distribution box or electrical distribution box, is used to distribute electrical power safely to multiple

Problems and Precautions in the Operation of Distribution Boxes

Many distribution boxes are damaged by lightning strikes every year. It is recommended to install zinc oxide surge arresters on all incoming and outgoing line sides of the distribution box.

Distribution Box Installation: A Complete Guide to Safe

The distribution box, often referred to as a breaker box, fuse box, or electrical panel, is a critical component of any electrical system. It acts as the central hub for

electrical distribution box preventive maintenance check list

Remove dust and debris from the enclosure and components. Clean any corrosion from terminals and connections. Ensure that ventilation openings are clear and unobstructed. Use appropriate cleaning

cs-178-project/imdb.vocab at main · apmalani/cs-178-project

Contribute to apmalani/cs-178-project development by creating an account on GitHub.

What Is a Distribution Box?

With replaceable receptacles, distribution boxes are versatile. You can customize them to match your electrical application. Some distribution

Electric power distribution

The problem of transmitting electricity over longer distances became a recognized engineering roadblock to electric power distribution, with many less-than

What are the common problems of distribution boxes?

The main problems encountered with distribution boxes include installation and layout problems, electrical connection and grounding problems,

Electrical Control Panels & Distribution Boxes: Sizes,

Introduction Electrical control panels and distribution boxes are the backbone of modern electrical systems. From powering homes and industrial

How to solve the problem of distribution box?

Here are some solutions when a power distribution box fails: Safety First: Make sure you are safe. Do not touch live parts, turn off the corresponding power switch to avoid the risk of electric shock. Check

## Contact Us

For more information, pricing, or custom solutions, please contact us:

Website: <https://boxesgaramella-andria.it>

Email: [sales@boxesgaramella-andria.it](mailto:sales@boxesgaramella-andria.it)

Phone: +39 331 584 7291

Address: Via delle Industrie, 15, 20154 Milano, Italy

This document is for informational purposes only. Specifications subject to change without notice.

