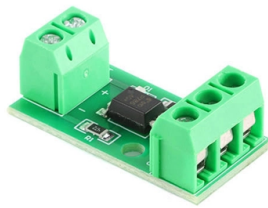


Temperature of wiring section in distribution box



Overview

This circuit must be wired with a conductor that has an insulation rating of at least 75°C (due to the circuit breaker) and sized based on the ampacity of 60°C (due to the receptacle). For electrical equipment rated for 600 V and less, terminations are typically rated at 60°C . NOTE: The equipment sizes and ampacities shown in the figures are arbitrary. The rules apply to any equipment rated 100 A or less. For equipment with termination provisions for circuits rated 100 A or less or marked for 14 AWG through 1 AWG conductors, the NEC allows conductors to be used based on. In the daily maintenance of power distribution systems, the biggest concern is the unexplained overheating of the wiring terminals. In fact, the fact that the earth distribution block does not overheat during long-term operation at rated current directly determines the service life of the entire. Jake Green, Head of Technical Engagement at Scolmore Group, gives a brief overview of the general range of conditions detailed in Section 522 of BS 7671, which an installer will have to consider as they select a suitable wiring system for an electrical installation. One of the fundamental. In other words: at equal section, you can send more current through a cable insulated with XLPE than one with PVC because the one with XLPE can handle a higher core temperature. This is the reason why the old PVC-insulated VMvK have been replaced by YMvK insulated with XLPE. To preserve the. The guide lists the process of design, assembly and documentation of a low-voltage switchgear assembly in the order of the necessary steps and at the same time assigns to these steps the relevant sections from the standard IEC 61439 / EN 61439.

Article Content

The well-tempered electrical enclosure

The ideal temperature for an electrical enclosure recommended by Pfannenberg is approximately 35°C. This not only protects the components but also minimizes

US Tech Online -> Setting the Correct Temperature of an Electrical ...

A higher working environment temperature is acceptable, and in most instances desired for electrical equipment. The acceptable working environment temperature for most electrical devices exceeds

How to Choose a House Distribution Box | CHINT global

A well-chosen distribution box ensures the safety and efficiency of your household electrical system. This article guides you through selecting a

Wiring requirements of distribution box

Wiring requirements of distribution box Upper incoming line, lower outgoing line, main circuit on the left, control circuit on the right, horizontal and vertical. The exposed laying can take the sheath line, or

BioPreferred

I buy for the federal government Federal law, the Federal Acquisition Regulation, and Presidential Executive Orders direct federal agencies and their contractors

Distribution Box and Selection Guide

Distribution Box Selection Guide This guide provides information on how to select the appropriate Distribution Box for Electric project. If you have

A Step-by-Step Guide to Wiring an Electrical Panel Box

Find out how to properly wire an electrical panel box with a comprehensive diagram and step-by-step instructions.

Study on temperature distribution of box-type distribution room under ...

As an important part of the power transmission and distribution network in the power system, many problems in the box-type distribution room deserve attention. Especially the overheating problem will

Ambient, core & installation temperature

During installation, the temperature of the cable sheathing must be carefully monitored. If it cools down too much (below 5°C), it must be warmed up again

Understanding Distribution Boxes: Your Guide to Power

Such boxes are tailored to particular project needs, providing an adjustable range of dimensions, components, layouts, and many more. Every

Electrical Distribution Panel Wiring Diagram Guide

Explore the key components and layout of an electrical distribution panel. Understand how each part works together to ensure safe and reliable electrical

What Is an Electrical Distribution Box? A Complete Guide

An electrical distribution box routes power, prevents overloads, and keeps wiring organised—essential for safe, efficient home and

WORLD WIDE WEB JOURNAL Home

O'Reilly & Associates, Inc. 103A Morris St. Sebastopol, CA United States

Temperature rise test of distribution boxes: evaluate the heat ...

The Healthy Pattern: When everything's working as it should, you'll see consistent, moderate temperatures throughout the box. Connection points appear slightly warmer than surrounding areas

Grounding System Installation Standards for Distribution Boxes and ...

Hey there! If you're working with electrical systems, you know that grounding isn't just some bureaucratic requirement—it's literally the difference between a safe, functional system and a potential disaster.

IEEE 525-2007_accepted

IEEE-SA Standards Board Abstract: The design, installation, and protection of wire and cable systems in substations are covered in this guide, with the objective of minimizing cable failures and their

on video How to Wire a Home Distribution Box

How to Wire a Home Distribution Box - Step-by-Step | Distribution DB box wiring diagram Welcome to our channel! In this video, we'll walk you through the

Selecting a suitable wiring system for an electrical

Section 522 of BS 7671 details those environmental conditions that need to be considered when selecting and installing wiring systems. The scope

The Truth About Heat Dissipation In Industrial Power Distribution ...

Even with fluctuations in ambient temperature, the casing will not become brittle or deformed. The robust clamping design maximizes the contact area between the wires and the

Understanding Distribution Boxes: A Comprehensive

A distribution box, also known as a power distribution box or electrical distribution box, is used to distribute electrical power safely to multiple

2016_Guide_IEC_EN61439_en_98171000_5_2016 dd

The application of the guide is focused on the manufacturing of distribution boards up to 630 A and in addition to checklists and instructions regarding the verification of compliance with the maximum

The NEC Rules

Note that the conductor does not terminate directly in the distribution equipment, but in a terminal or tap box using 90°C-rated terminations. Frequently, manufacturers are asked when distribution

Requirements And Specifications For Installation Of

Wiring specifications: The power should be turned off during wiring to ensure safety. Use high-temperature resistant copper core wire, and the cross

A Definitive Guide To Distribution Boxes

The distribution box acts as the center of power distribution, distributing electricity to all connected devices. A distribution box, also known as a distribution board, panel board, breaker

Electrical Enclosure Temperature Control Guide

Keeping the right temperature inside an electrical enclosure is very important. If it gets too hot, parts can stop working or even catch fire. If it gets

Contact Us

For more information, pricing, or custom solutions, please contact us:

Website: <https://boxesgaramella-andria.it>

Email: sales@boxesgaramella-andria.it

Phone: +39 331 584 7291

Address: Via delle Industrie, 15, 20154 Milano, Italy

This document is for informational purposes only. Specifications subject to change without notice.

