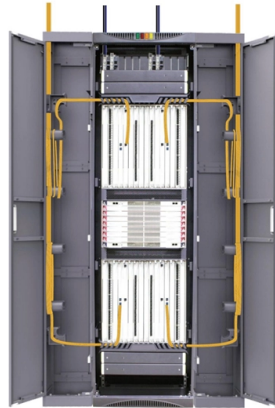


# Stainless steel explosion-proof distribution box explosion-proof lighting maintenance box



## Overview

4 way Atex distribution box with stainless steel stand frame for 110V power in hazardous zones. Built with a durable GRP enclosure with SS stand Frame and IP66 protection, ideal for powering tools and lights in Zone 1, Zone 2, Zone 21, and Zone 22 environments. Atex Delvalle provides a custom made facility for hazardous area stainless steel Aisi 304L & Aisi 316L Atex and IECEx Certified junction boxes, terminal boxes, large atex enclosures, Empty enclosures. ♦ Enclosure of the explosion-proof illumination distribution panels treated with anti-static coating and all fasteners are. Warom Explosion proof Distribution Box (Ex d IIB+H2) in 316 stainless steel. Enclosure: 316 stainless steel. Equipped with a specialised hinge structure which can prevent damage to the flameproof joints when opening and closing the box; greatly. These explosion-proof enclosures are the spearhead in terms of safety and provide optimum protection for your installed components against the ingress of gas, dust or water. We offer bespoke, custom-made terminal boxes and terminal box combinations, as well as standard products with short delivery times. Our products are certified for installation technologies all over the.

## Article Content

4 way Atex distribution box with stainless steel stand frame

4 way Atex distribution box with stainless steel stand frame for 110V power in hazardous zones. Built with a durable GRP enclosure with SS stand Frame and IP66 protection, ideal for powering tools and

ATEX SS316 IP66 Junction Box Enclosure

Attributes Explosion-Proof Box Type IP66 (includes IP65 protection rating) IP level Stainless Steel Material Customize External Size Passivation Surface Treatment Zhejiang, China Place of Origin

Explosion Proof Equipment Malaysia | Junction Box | Cable Gland

IEP Malaysia provides explosion proof junction box, explosion proof cable gland, and other equipment to help minimize the risk of explosions and fire caused by electrical systems.

LarsonElectronics

Larson Electronics Releases 9000W Metal Halide Light Tower, 6 Lamps, Remote Ballast Box, 10"-35" - 4/1/2024 Explosion Proof Lighting Portable Hazardous Location Lighting Explosion Proof Network

Ex Enclosure Systems

They are completely pre-assembled explosion protection enclosures made of resistant plastic including ATEX and IECEx approval. The special feature of the

Explosion Proof Distribution Box & Electrical Enclosures

Durable Hexlon Explosion Proof Distribution Boxes and Electrical Enclosures, IECEx and ATEX certified for Zone 1 and Zone 2.

Explosion Proof Electric Box-Ouhui Lighting

Explosion Proof Electric Box, products shock-resistant and durable, energy-saving and environmentally friendly, models and styles are complete, direct sales, international certification, applicable to a

Smart Lifting & Motion Control Solutions | Columbus McKinnon

Columbus McKinnon's portfolio of trusted worldwide brands can help you safely and efficiently move your materials, and business, forward.

Explosion Proof Enclosure Comprehensive Guide

Explosion-Proof Distribution box: These smaller components are structurally similar to distribution cabinets. You can use these for the distribution

## Junction Box Aluminium (Ex d) EJB-A

The EJB A series can be used for the following main applications: control station and instrument housing; motor starter unit; lighting control panel; electronic

Terminal boxes | Junction boxes | Ex | Ex e | Ex d | ATEX | Explosion ...

Terminal boxes for safe installation in hazardous areas Safely conduct, connect and distribute energy in hazardous areas with R. STAHL's terminal boxes. We offer bespoke, custom-made terminal boxes

Industrial Stainless Steel Explosion-Proof Waterproof Power Supply ...

Industrial Stainless Steel Explosion-Proof Waterproof Power Supply Maintenance Electric Distribution Box, Find Details and Price about Distribution Box Power Distribution Box from Industrial Stainless

Explosionproof stainless steel lighting ( power )

This series of products have good explosion-proof function, suitable for IIA, IIB, IIC explosive gas environment and various flammable and explosive sites, mainly

Stainless Steel Explosion-Proof Corrosion-Resistant

The enclosure is formed by die-casting aluminum alloy or welding carbon steel or stainless steel. Aluminum alloy/carbon steel surfaces feature high-pressure

Explosion-Proof Corrosion-Resistant Distribution Box BXM (D)8030

BXM(D) 8030 Explosion-Proof Corrosion-Resistant Distribution Box, designed for hazard zones, ensures safe power control and prevents ignition risks.

Wholesale Explosion-proof Electrical Manufacturers,

CZ Electric Co., Ltd., located in the Yangtze River Delta Economic Zone-Jiaxing City, Zhejiang Province, is a national high-tech enterprise. It is an explosion

## Junction Box SS316 (Ex d) EJB-S

EJB S series Ex d enclosures are normally used in the chemical and petrochemical plants, off-shore platforms, refineries and any other industry where hazardous

Control Panels & Distribution Boards

EJBX Enclosures - with various types of rugged stainless steel enclosures this is a durable panel solution to protect electrical control and distribution equipment in

HRMD92 Explosion proof Distribution Box (Ex d IIB+H2)

Available with a wide range of built in components. Enclosure: 316 stainless steel. Equipped with a specialised hinge structure which can prevent damage to the

DwyerOmega | Shop for Sensing, Monitoring and

Explore DwyerOmega's comprehensive range of industrial sensing, monitoring, and control solutions from thermocouples to pressure transducers engineered for

BXM(D)8061 Series Illumination Distribution Box

Enclosure of the explosion-proof illumination distribution panels treated with anti-static coating and all fasteners are anti-loosening. The operating switch panel on

## Contact Us

For more information, pricing, or custom solutions, please contact us:

Website: <https://boxesgaramella-andria.it>

Email: [sales@boxesgaramella-andria.it](mailto:sales@boxesgaramella-andria.it)

Phone: +39 331 584 7291

Address: Via delle Industrie, 15, 20154 Milano, Italy

This document is for informational purposes only. Specifications subject to change without notice.

