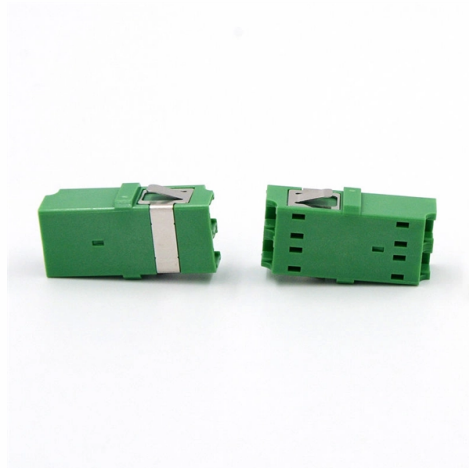


# Huawei 48-Port Fiber Optic Core Switch



## Overview

The Huawei CE6881-48S6CQ-B is a high-performance switch designed for enterprise networks. This switch, identified by its model number ce6881-48s6cq-b, is part of Huawei's advanced network solutions, offering robust data handling capabilities and secure connectivity. Within the fast-paced world of industrial networking, the S5735-L48P4X-A Huawei switch provides a "simplified" yet powerful architecture. CE6881-48S6CQ Switch is next-generation 10GE access switch with 48 x 10GE SFP+ ports and 6 x 100GE QSFP28 ports. On the front side, there are also two SFP+ ports for stacking (configuration available only via CLI), 2x RJ45 for management and console, a USB port, and a reset button. On the back, it is equipped with. Cheap Price Huawei S6730-H48X6C CloudEngine 48\*10GE SFP+ ports FC Fiber Channel Datacenter Switch (02353FSF/-003/-007/-009/-011),Huawei S6730-H48X6C CloudEngine 48\*10GE SFP+ ports FC Fiber Channel Datacenter Switch (02353FSF/-003/-007/-009/-011) datasheet download pdf, welcome to buy Huawei.



## Article Content

Best 10Gb Switch for SMB in 2025: Unlock Next-Gen Network

Choosing the Right Switch: Core Features to Consider  
Port Density: Ensure sufficient 10Gb ports to accommodate current and future devices.  
Performance: Prioritize low latency and high

48-Port Gigabit Ethernet L2+ Stackable Switch with

Discover QSFPTEK S5300-48T4X L2+ gigabit switch! The 48 port switch supports static routing, RIP, OSPF, stacking, ideal for deployment as an access switch in

HCDF48PDLC00 (48-Port Hybrid Cable Distribution Frame)

HCDF48PDLC00 is a hybrid cable distribution frame (HDF) used to route hybrid cables for S series hybrid optical-electrical switches. One end of a hybrid cable is connected to an AP or a remote unit,

Empowering Enterprise Connectivity: An In-Depth Look at the Huawei ...

They allow the switch to connect to a 10Gbps core network via single-mode or multi-mode fiber.  
Physical Protection: The switch includes a built-in 6 kV surge protection for service ports, a

Huawei S6730 Switch - 10GE Aggregation & Core

Explore Huawei S6730 Switch: 24-48 10GE access, 40/100GE uplinks, VXLAN/BGP-EVPN, built-in WLAN AC, SEP/ERPS resilience,

Huawei S5700

Model NO.: Huawei S5700 - 48P - LI - AC Usage: Computer, Ethernet Type: Fiber Optic Equipment Support Network: Fiber Optic Equipment

Huawei Switch 48 Port: Sufficient Connections? Will Port Density ...

A single 48-port Huawei switch provides a unified control plane. Applying consistent security policies (like port security or ACLs), Quality of Service (QoS) settings, VLAN configurations, and firmware

S5700-48U-NDF

The S5700-48U-NDF is connected between two switches or between a PoE switch and a PD for isolation protection. When the S5700-48U-NDF is used between a PoE switch and a PD, each port

Huawei 48 Port POE+ 4xSFP 400W L3 Switch | S310

Enhance your network with the Huawei S310-48P4S Gigabit PoE Switch, featuring 48 x 10/100/1000BASE-T ports with 380W PoE+, along with 4 x GE SFP ports

## Huawei S6700 Series Switches Product Brochure

The S6700 has industry-leading performance and provides up to 24 or 48 line-speed 10GE ports. It can be used in a data center to provide 10 Gbit/s access to servers or function as a core switch on a

## Huawei S5735-S48P4X Switch 48xGE PoE+ 4x10G

Huawei CloudEngine S5735-S is a series of standard gigabit access switches

## Huawei CE8800 Series 10G Fiber Optic Switch 24 Port

Product Description Huawei CE8800 Series 24-port, 10G Ethernet optical (SFP+) and 2-port 100G Ethernet optical (QSFP28) Subcard CE88-D24S2CQ Huawei

Buy In Bulk Huawei 24 Port SFP Switch Includes POE Switch Option ...

Types of Huawei 24-Port SFP Switches A Huawei 24-port SFP switch is a high-performance networking solution designed to support fiber-optic connectivity, enabling fast, reliable, and scalable data

## CE6881-48S6CQ Switch CE6800 Series PN

The switch provides high performance and high port density on data center networks and high-end campus networks. it has advanced hardware

Marvell Technology, Inc. | Essential technology, done right

Designed for your current needs and future ambitions, Marvell delivers the data infrastructure technology transforming tomorrow's enterprise, cloud, automotive,

## Huawei S6720-50L-HI-48S Best offer and datasheet

The S6720-50L-HI-48S is a state-of-the-art fixed switch designed for future-proof networks that demand not just extreme bandwidth, but also

## Huawei S530-48S4XE Gigabit fiber switch, 4x SFP+ | Discomp

Huawei eKitEngine S530-48S4XE is an advanced L3+ switch that offers 48x SFP and 4x SFP+ ports. On the front side, there are also two SFP+ ports for stacking (configuration available only via CLI), 2x

## Huawei, S220-48P4S (98012379),48 port gigabit PoE+ switch (380w)

The Huawei S220-48P4S is a managed switch designed for network access and aggregation, similar to the S220-48P4X. It features 48 x 10/100/1000BASE-T ports with PoE+ (IEEE 802.3at standard) and

## Huawei S310-48T4S 48-Ports Switch

Embark on a journey towards unparalleled connectivity with the Huawei Switch S310-48T4S, a versatile and robust network switch designed for enterprises seeking to revolutionize their networking

### Corporate Information

Founded in 1987, Huawei is a leading global provider of information and communications technology (ICT) infrastructure and smart devices. We have

### Huawei 48 Port Switch | S310-48T4X

Enhance your network with the Huawei S310-48T4X Switch, featuring 48 x 10/100/1000BASE-T ports and 4 x 10GE SFP+ ports for versatile Fibre or

### Network Switches | Huawei Enterprise

Huawei Ethernet Switches Turbocharge your enterprise network with high-performance, high-availability for resilient services and simplified management.

### S5720-52X-SI-48S

If the optical port, no matter in Up or Down state, has an optical module installed, the optical port is still used for data switching when the electrical port has an Ethernet cable connected.

### Huawei S6730-h48x6c Cloudengine 48\*10ge Sfp+ Ports Fc Fiber

Huawei CloudEngine S6730-H48X6C Bundle (48\*10GE SFP+ ports, 6\*40GE/100GE QSFP28 ports, with license, without power module) Tip: Please add 2pcs of power supplies for switch

### HUAWEI CloudEngine S5735-S48PN4XE-V2

Die 2,5GE-Switches der Serie CloudEngine S5735-S-V2 können in verschiedenen Anwendungsszenarien wie Access Layer und Aggregations-Layer von Unternehmens-Campus

### S6300 Series 10GE Switches

The S6300 has industry-leading performance and provides up to 24 or 48 line-speed 10GE ports. It can be used in a data center to provide 10 Gbit/s access to servers or function as a core switch on a

### Huawei 48-Port Switch Guide: How to Choose the Right One

A practical, no-fluff guide to selecting a Huawei 48-port switch—covering real-world use cases, key specs to compare, cost trade-offs, and what actually matters for SMBs and campus

### Empowering Enterprise Connectivity: An In-Depth Look at the Huawei ...

48x GE PoE+ Ports: These are RJ45 electrical ports supporting 10/100/1000 Mbps speeds with full auto-negotiation. 4x 10 GE SFP+ Ports: These are optical slots designed for Small Form

Huawei S5736-S48S4X-D Access Switch | 48 x 1G Ports + 4 x 10G

The Huawei S5736-S48S4X-D Access Switch features 48 x 1G ports and 4 x 10G SFP+ uplinks, ideal for large enterprise networks. Shop now at Network-Switch!

CloudEngine S5736-S Series Switches | Huawei Enterprise

Feature-rich with software-defined port speeds. CloudEngine S5736-S Series Switches are next generation standard all-optical GE switches, with 48 downlink optical ports and four 10 GE uplink ports.

Huawei 24 port gigabit switch

Roughly \$90, verified supplier offers the Huawei 24 port gigabit switch, suitable for enterprise-level network management. Ideal for resellers and wholesalers.

Network A D China Trade,Buy China Direct From Network A D

Huawei CloudEngine S5735-L-V2 Series Ethernet 8 24 32 48 Port Internet Switches De Enterprise Access Industrial Network Switch US \$229.00 MOQ: 1 piece 2 yrsCN Chat now

Huawei 24 port poe switch

Managed PoE Switches Huawei's managed 24-port PoE switches provide full administrative control, enabling deep network customization, monitoring, and advanced traffic management. These

## Contact Us

For more information, pricing, or custom solutions, please contact us:

Website: <https://boxesgaramella-andria.it>

Email: [sales@boxesgaramella-andria.it](mailto:sales@boxesgaramella-andria.it)

Phone: +39 331 584 7291

Address: Via delle Industrie, 15, 20154 Milano, Italy

This document is for informational purposes only. Specifications subject to change without notice.

