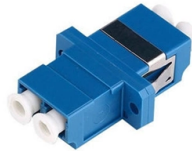


180 Distribution Box



Overview

Distributor box, application: Standard, connection method: M12 socket Plastic, number of slots: 8, number of positions: 5, coding: A, slot assignment: Double, status display: yes, PNP; master cable connection: M23 plug connection 180°, shielding: no

Distributor box, application: Standard, connection method: M12 socket Plastic, number of slots: 8, number of positions: 5, coding: A, slot assignment: Double, status display: yes, PNP; master cable connection: M23 plug connection 180°, shielding: no

Distributor box, application: Standard, connection method: M12 socket Plastic, number of slots: 8, number of positions: 5, coding: A, slot assignment: Double, status display: yes, PNP; master cable connection: M23 plug connection 180°, shielding: no

NOTE: Observe the permissible bending radii when. Our conical postal and distribution boxes, specifically designed with sliding and lockable lid structure, comfortable handles, and ergonomic conical shape, cater not only to postal services, documentation, and document storage, but also to a wide range of industries such as logistics, supermarket. For use as exchange or intermediate distributors for 10-pair connection or disconnection modules. Dimensions: 742x309x129 mm (HxWxD). capacity: VS Modular modules 18x10 pairs. Effective protection: The PRITEX control cabinet provides perfect protection for electrical components such as switches, fuses, relays and controls. It measures 180 x 240 x 120 mm and comes in light grey (RAL 7035) Optimally insulated: The distribution box is made of halogen-free ABS (acrylonitrile. METAL DISTRIBUTION BOX JXF 180/100/30 WITH TWO DOORS brand ELMARK with 3+2 warranty. Check out and the other products in the category Metal distribution boards. Distribution box; Motion/presence detector; 1 input; 5 outputs; Cod. A; MIDI; black (4055143292993) | WAGO.

Article Content

Eaton MEM EBMXPC1 Distribution Board 180mm Extension Box

Description / Features Memshield 3 Distribution Board 180mm Extension Box Eaton's Memshield 3 MCB distribution boards have evolved through an intimate knowledge and feedback from electrical

SACB-8/16-L-M23 180

SACB-8/16-L-M23 180 - Distributor box 1692721 Distributor box, application: Standard, connection method: M12 socket Plastic, number of slots: 8, number of positions: 5, coding: A, slot assignment:

Distribution box (899-631/180-000) | WAGO

Distribution box; Motion/presence detector; 1 input; 5 outputs; Cod. A; MIDI; black (4055143292993) | WAGO.

SK180.3 Branching box | Fuse and branching boxes

SK180.3 Branching box is equipped with separate connectors. The connectors are tinned, so they can be used for both Al and Cu cables up to 50 mm².

Airflow Airflex 15 Point Distribution Box 180 Spigot

Overview The Airflow Airflex 15-Point Distribution Box is a high-quality galvanised steel component designed to provide efficient and reliable air distribution.

What Is a Distribution Box?

What to Look for When Choosing a Distribution Box If you're going to buy a distribution box, there are several things you should look for. You

180W 15A 18CH DC12V Switching CCTV Power Distribution Box

180W 15A 18CH DC12V Output Switch Mode CCTV Distribution Box Portable Power Supply For IR Camera Monitoring Equipment LED Tape Lights.

Eaton EBMXPC1 Extension Box 180mm

It offers reliable, safe and high performance protection of electrical power distribution systems. The Eaton EBMXPC1 is a 180mm cable spreader

180 DISTRIBUTION

Hier sollte eine Beschreibung angezeigt werden, diese Seite lässt dies jedoch nicht zu.

Wall-Mounted Distribution Box 400*300*180mm IP66

Wall-Mounted Distribution Box 400*300*180mm IP66 ABS Plastic Electrical Box
Fireproof and Waterproof US\$20.00 5-99 Pieces US\$16.85

Distribution Box Guide: Types, Components & Solutions

Understand distribution boxes (DB boxes) in 5 minutes. Learn about types, components, functions, and uses. Find the perfect DB box for your needs.

PRITEX Plastic Control Cabinet, IP65 Industrial Housing 180 x 240 x

Effective protection: The PRITEX control cabinet provides perfect protection for electrical components such as switches, fuses, relays and controls. It measures 180 x 240 x 120 mm and

Complete Guide For Distribution Boxes Types

Distribution boxes, also known as electrical distribution boards or panels, are pivotal components in electrical systems, ensuring the safe and organized distribution

Combi Distribution Box, 180 pairs, SM

For use as exchange or intermediate distributors for 10-pair connection or disconnection modules. Dimensions: 742x309x129 mm (HxWxD). Max. capacity: VS Modular modules 18x10 pairs.

Terminal block, Linergy, box connector, natural colored block, 180A,

Price is "List Price" and may be subject to a trade discount - check with your local distributor or retailer for actual price.

Distribution boxes - For modular and decentralised

Modern automation solutions are becoming increasingly decentralised. As a result, you need distribution systems that can be easily integrated into the common

METAL DISTRIBUTION BOX JXF 180/100/30 WITH TWO DOORS

METAL DISTRIBUTION BOX JXF 180/100/30 WITH TWO DOORS brand ELMARK with 3+2 warranty. Check out and the other products in the category Metal distribution boards.

SACB-8/16-L-M23 180

Convenient: increased machine availability thanks to quick and easy diagnostics. Save space: distributor box with double occupancy for two sensors in one slot.

Quiet-Vent 15 Point Rear Entry Distribution box 180

The Quiet-Vent 15 Point Rear Entry Distribution Box is designed for efficient distribution of airflow to multiple points, ideal for larger systems. It can be

Air Excellent DBOX stepped adaptor 125-150-160-180-200

The stepped adaptor facilitates easy connection of Aerfoam insulated ducts to an Air Excellent distribution box. It accommodates all Aerfoam duct sizes (125, 150,

Understanding Distribution Boxes: A Comprehensive

A distribution box, also known as a power distribution box or electrical distribution box, is used to distribute electrical power safely to multiple

Quiet-Vent 15 Point Rear Entry Distribution box 180

Quiet-Vent 15-Point Distribution Box with 180mm rear entry spigot and 15 x 75mm spigots. Versatile and easy to install.

Contact Us

For more information, pricing, or custom solutions, please contact us:

Website: <https://boxesgaramella-andria.it>

Email: sales@boxesgaramella-andria.it

Phone: +39 331 584 7291

Address: Via delle Industrie, 15, 20154 Milano, Italy

This document is for informational purposes only. Specifications subject to change without notice.

